



BRUSSELS, A SUSTAINABLE CITY!



LET'S WORK TOGETHER TO MAKE
BRUSSELS A SUSTAINABLE CITY



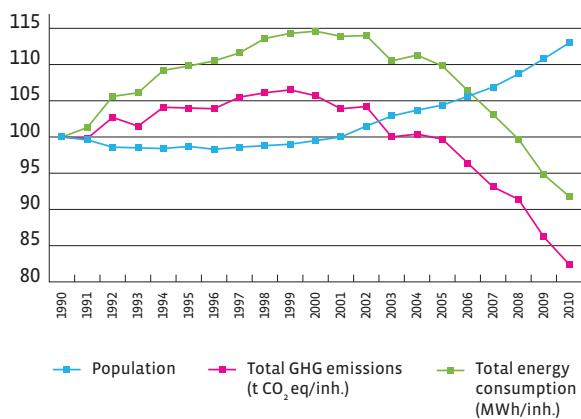
OVER THE PAST FEW YEARS, THE BRUSSELS-CAPITAL REGION HAS IMPLEMENTED MANY ACTIONS AIMED AT TAKING ON ENVIRONMENTAL CHALLENGES SPECIFIC TO A MODERN AND DYNAMIC CITY/REGION. THE OBJECTIVE IS TO MAKE BRUSSELS, THE BELGIAN AND EUROPEAN CAPITAL, A MODEL IN TERMS OF SUSTAINABLE DEVELOPMENT, QUALITY OF LIFE AND SOLIDARITY FOR ALL. THIS TRANSITION IS UNDERWAY! FEATURING KEY FACTS, THIS BROCHURE WILL PROVIDE YOU WITH ALL THE NECESSARY INFORMATION ALLOWING YOU TO BECOME THE BEST AMBASSADORS FOR OUR REGION IN THE FUTURE. BECAUSE THE SUSTAINABLE CITY IS BEING CREATED AND CONSTRUCTED EVERY DAY, TOGETHER, THANKS TO EACH ONE OF US AND FOR FUTURE GENERATIONS. THAT'S WHY, WITH MORE THAN ONE MILLION OF US IN BRUSSELS, EVERY ACTION COUNTS.



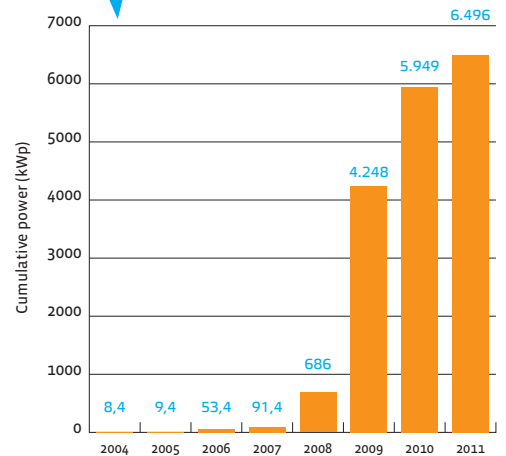
CLIMATE CHANGE AND ENERGY

A significant reduction in CO₂ emissions

Since 2004, energy consumption among the population of Brussels and CO₂ emissions per inhabitant have reduced by an average of 18% despite a growth of population!



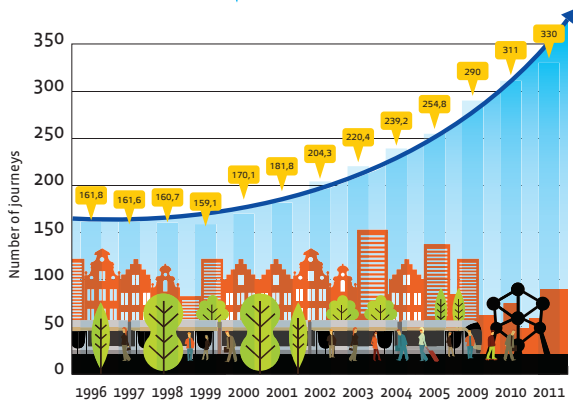
Since 2004, the Region has seen an impressive increase in the energy produced by photovoltaic installations.



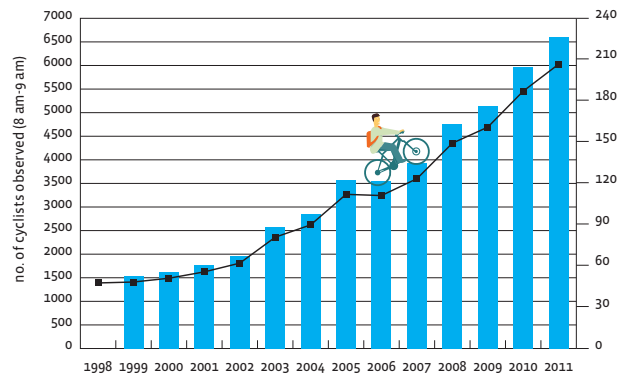
TRANSPORT

A spectacular increase in alternative methods of transport

Between 2000 and 2011 the use of regional public transport (STIB) grew by 94% increasing from 170 million to 330 million journeys a year.



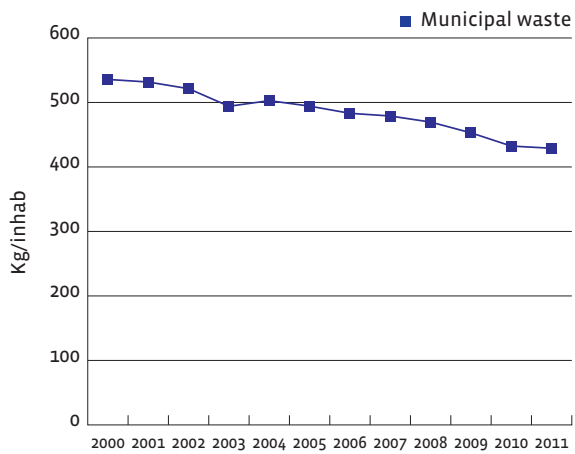
Totals and averages of the number of cyclists in 16 places in May and September since 1998.



WASTE MANAGEMENT

A clear reduction in waste production thanks to an active prevention policy

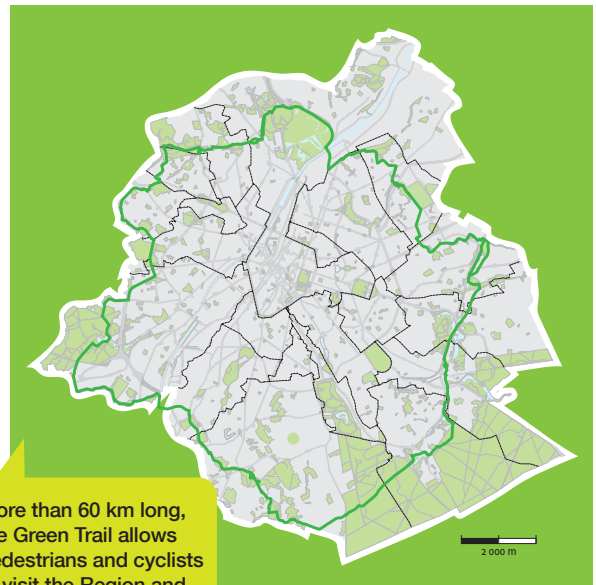
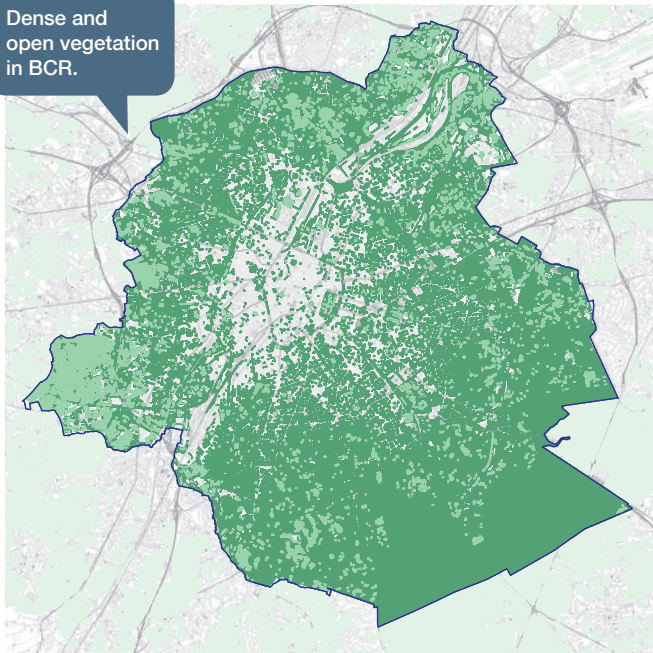
A reduction of 20% per inhabitant since 2000 for municipal waste.



GREEN SPACES

Brussels devotes 53% to green spaces

Dense and open vegetation in BCR.



More than 60 km long, the Green Trail allows pedestrians and cyclists to visit the Region and cross many parks and nature reserves.



NATURE

An exceptional biodiversity in an urban environment



793 plant species



44 mammal species

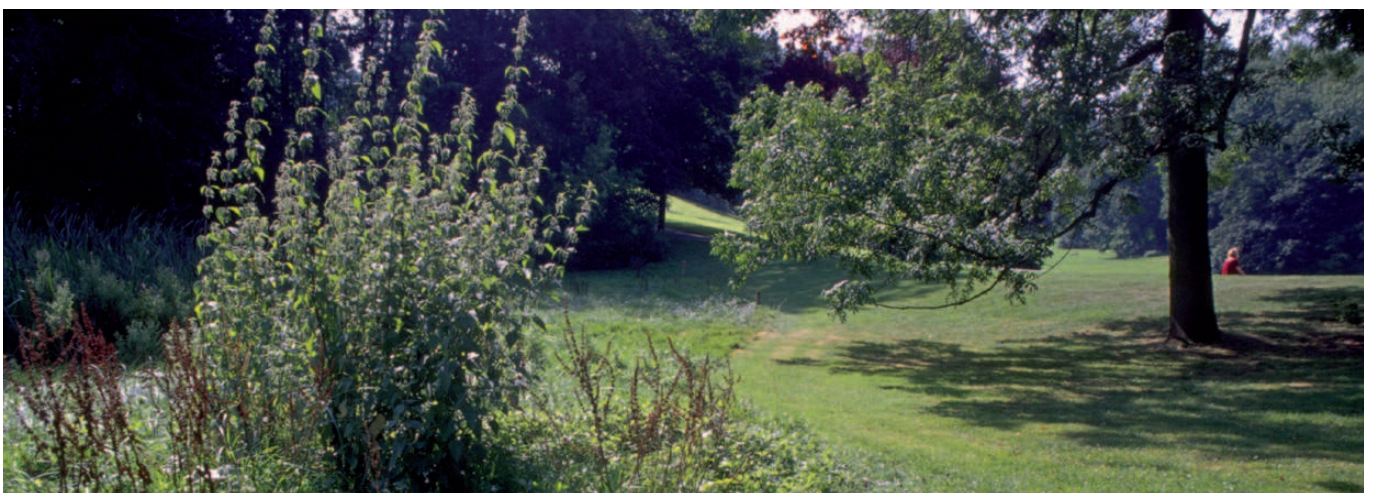
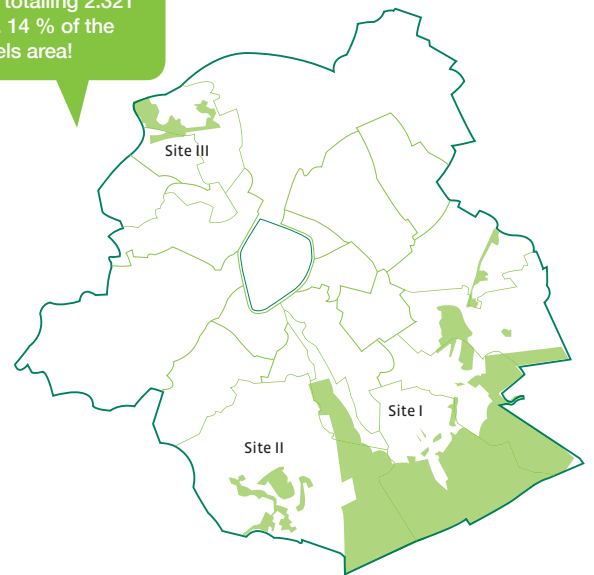


92 birds



8 amphibians and reptiles

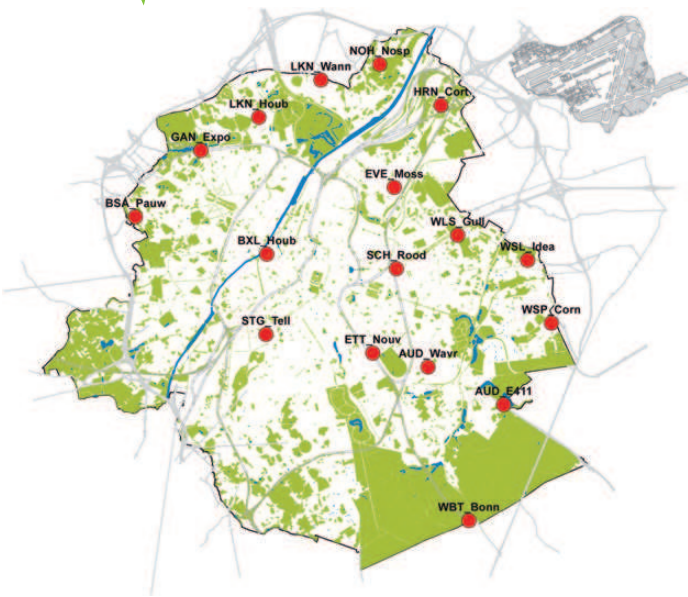
Brussels has three Natura 2000 sites (SAC), totalling 2.321 ha, i.e. 14 % of the Brussels area!



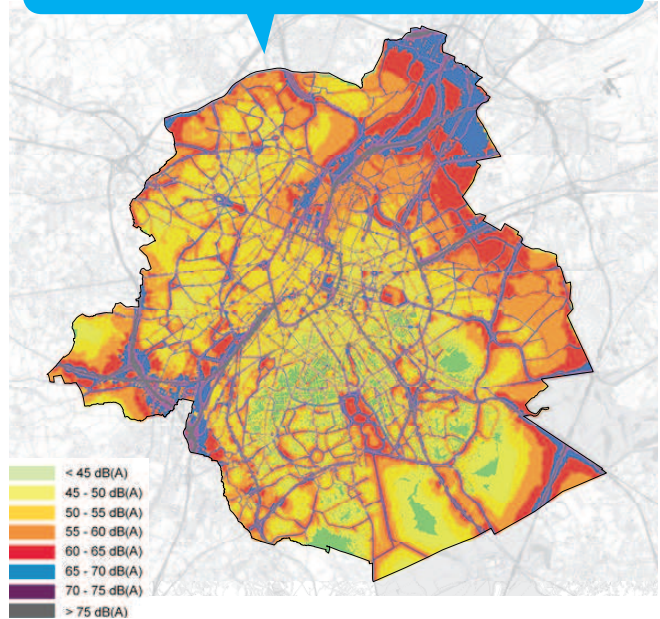
REDUCTION IN INCONVENIENCES

Almost half of the noisiest points in the city have been redeveloped

● Brussels network of noise measurement stations.



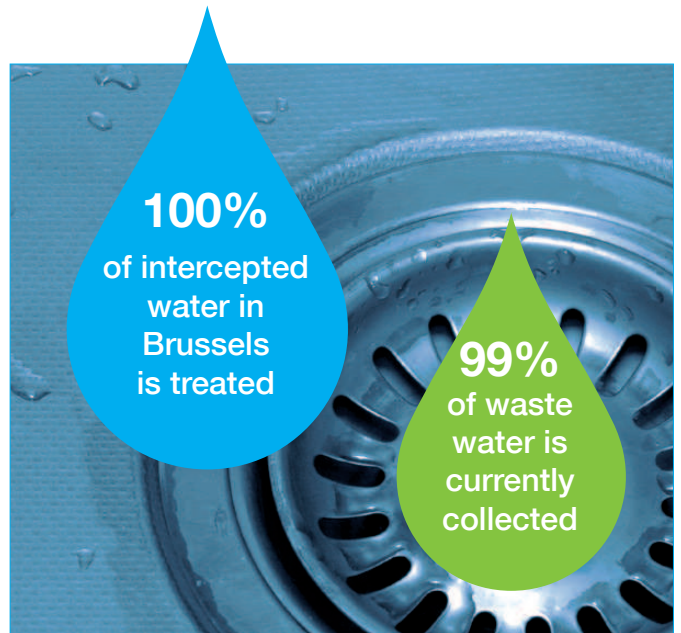
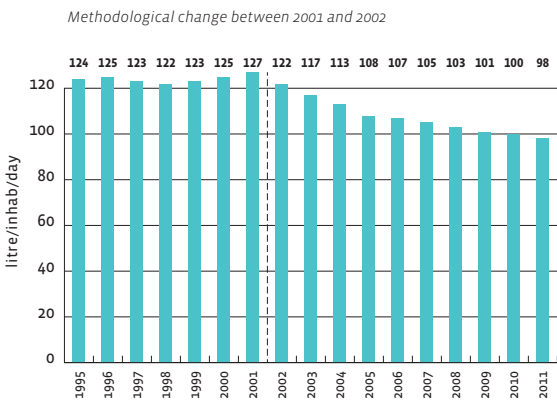
Land registry of road traffic noise 2006 - L_{den} indicator (NMPB method – CadnaA software) - Road transport noise L_{den} indicator – 2005.



WATER

Numerous actions carried out to meet the great challenge of water management in Brussels

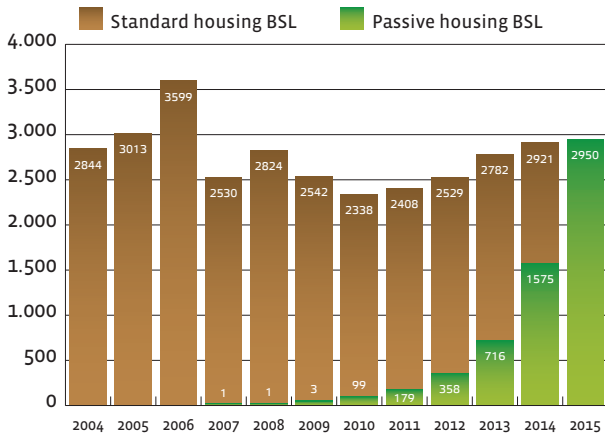
Evolution in water consumption per day and per inhabitant in the Brussels Region (1995-2011).



SUSTAINABLE NEIGHBOURHOODS

Change, renovate, build

Proportion of passive housing in the total construction of housing in Brussels.



Tivoli: a new sustainable neighbourhood accessible to all with its 500 dwellings, a park, two crèches, shops and an estate for companies in the sustainable construction sector.



EXEMPLARY BUILDINGS

156 projects · 350,000 m²
1/5 of building sites in Brussels · 1,250 jobs



EMPLOYMENT-ENVIRONMENT ALLIANCE

30,000 hours of training · + 2,500 “green” jobs



GREEN JOBS IN BRUSSELS (2005)

12,400 jobs

FOUR STRONG SPECIFICITIES OF BRUSSELS



A SOCIAL APPROACH

With 20% unemployment and a highly diversified population, Brussels cannot ignore the social aspect of sustainable development. Inclusion of residents and participation are consequently at the heart of its public policies.

- Over six years, more than 128,000 energy subsidies granted for a total amount of 77 million euros.
- In five years, 20 sustainable neighbourhoods resulting from corporate social responsibility.
- Since 1994, direct public involvement in cumulative budgets of 750 million euros.



AN IMPRESSIVE TRANSFORMATION

- While 5 years ago it had hardly any at all, today the Brussels Region counts more than 700,000 m² of low energy buildings, of which more than 350,000 m² are passive, low or very low-energy buildings.
- In 2015, the passive standard will be mandatory for all new structures, and the very low-energy standard for renovation. Brussels will be the first Region in the world to adopt these criteria for all buildings whether private or public.
- The same rapid changes are visible on other fields, for example: electromagnetic radiation (WiFi, ...) is limited to 3V/m. This standard is one of the strictest in the world!



AN INFLUENTIAL POSITION IN EUROPE AND THE WORLD

Brussels, as European capital, wants to play a leading and exemplary role in environmental policies, as a flagship for European implication in the world environmental challenges. Changing Brussels is changing Europe!

- Brussels is directly involved in the international discussions on Sustainable Development (COP, international summits, etc.) and sends the messages of sustainability of cities loud and clear to world leaders.
- Brussels is known as a crossroads for the exchange of expert's ideas and experiences: tomorrow, as European Green Capital, it could be an effective ambassador.
- Brussels hosts all major European decision-makers, and new developments have more impact here than elsewhere.
- Brussels is highly adaptable and can serve as an example for other European cities wishing to transform their policies.



A REGIONAL SUSTAINABLE DEVELOPMENT PLAN

Brussels is aware of its assets and weaknesses. For greater efficiency, it has united its economic, social and environmental strategies in a single plan that:

- Guides and orients all public policies.
- Takes account of existing relations with the other Regions.
- Includes monitoring of the sustainability of public policies.



WWW.SUSTAINABLECITY.BE



Copyrights

Cover 1 (from left to right): X. Claes - Asbl Bonnevie - F. Demeuse - F. Didion - M. De Lausnay
P.2: F. Demeuse - P.3: Apere - P.4: STIB-MIVB - P.5: Annemie Drabs - Brussels Environment - M. Molitor
P.6: X. Claes - P.7: Brussels Environment - Vilda - N. Nizette - P.8: Ph. De Staercke - P.9: Shutterstock
Brussels Environment - P.10: MSA - MDW architecture - Dieter Telemans - P.11: Asbl Bonnevie - F. Demeuse - X. Claes
Global View - Cover 4 (from left to right): STIB-MIVB - Global View - Asbl La Rue - Global View - Dieter Telemans